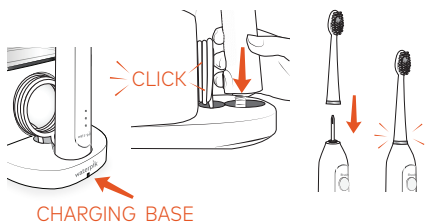


# waterpik®

## SONIC-FUSION®

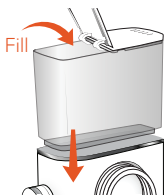
QUICK START GUIDE Model SF-01 | SF-02

### Getting Started (First time use only)



Place toothbrush into charging base. Attach flossing brush head.

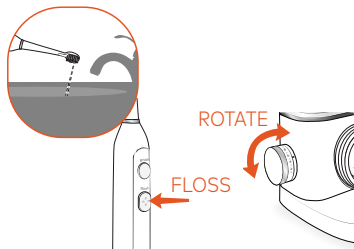
**Tip:** For best experience and optimal battery performance, keep the toothbrush stored in the charger base when not in use.



Fill reservoir with warm water and replace it firmly on the base.

### Prime Unit

Point tip into sink. Press FLOSS button. Rotate pressure knob repeatedly between high and low until water flows.



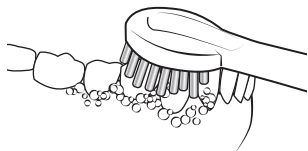
# waterpik®

## SONIC-FUSION®

QUICK START GUIDE Model SF-01 | SF-02

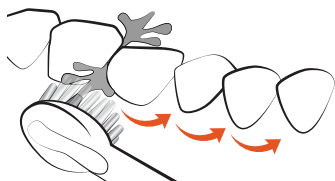
### 3 Modes

---



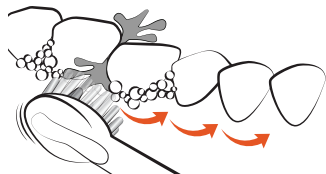
#### Brush

Press BRUSH button, use light pressure and clean all tooth surfaces.



#### Floss

Press FLOSS button, keep lips partially closed to allow water to flow into sink.



#### Brush + Floss

Press BRUSH button, then press FLOSS button.