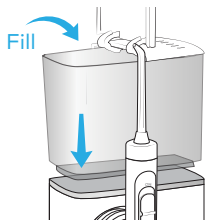


waterpik® waterflosser®

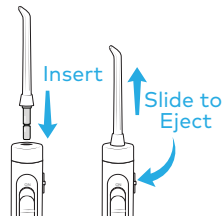
QUICK START GUIDE

CC-01 & CC-02 Series

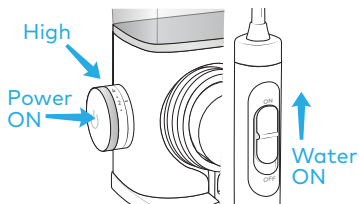
1 Getting Started (First time use only)



Fill reservoir with warm water and replace it firmly on the base.



Insert tip firmly until it clicks into place.



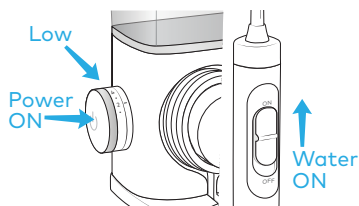
Turn pressure to high, point tip into sink. Push power ON and slide water switch ON. Leave on until water flows, then turn OFF.

waterpik® waterflosser®

QUICK START GUIDE

CC-01 & CC-02 Series

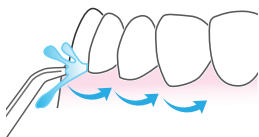
2 Water Floss



Turn pressure to low. With water switch in OFF position, place tip in mouth. Turn Power ON. Turn water switch ON.



Close lips enough to prevent splashing, while still allowing water to flow from mouth into the sink. Increase pressure to your liking.



Aim water at the gumline at a 90° angle. Follow the gumline and pause briefly between teeth.

TO AVOID MESS: PLACE THE TIP IN YOUR MOUTH BEFORE TURNING WATER ON