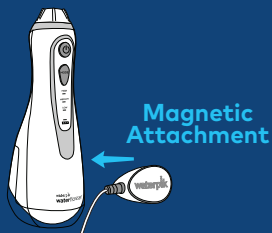


# waterpik® waterflosser®

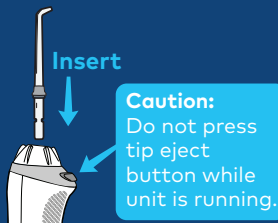
## QUICK START GUIDE

Cordless Advanced 500 Series

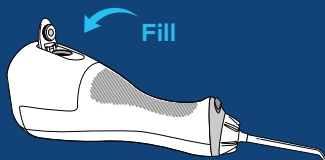
### 1 Unit Prep



**A.** Charge unit for 4 hours by placing the magnetic charger on the front of the unit.



**B.** Insert tip until it clicks into place. To remove tip, push the tip eject button.



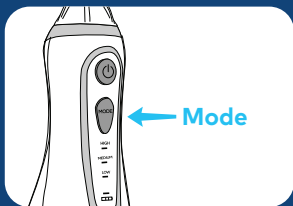
**C.** Lift the flip top on reservoir and fill with warm water. Refill as needed.

# waterpik® waterflosser®

## QUICK START GUIDE

Cordless Advanced 500 Series

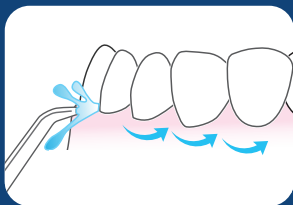
### 2 Water Floss



**A.** Lean over sink. Place tip in mouth. Close lips enough to prevent splashing. Turn power ON. Press Mode button to adjust pressure.



**B.** Start on low pressure and increase to your liking. Keep unit upright during use to ensure continuous water flow.



**C.** Aim water at the gumline at a 90 degree angle. Follow the gumline and pause briefly between teeth.

**TO AVOID MESS: KEEP TIP IN MOUTH WHILE UNIT IS ON.**