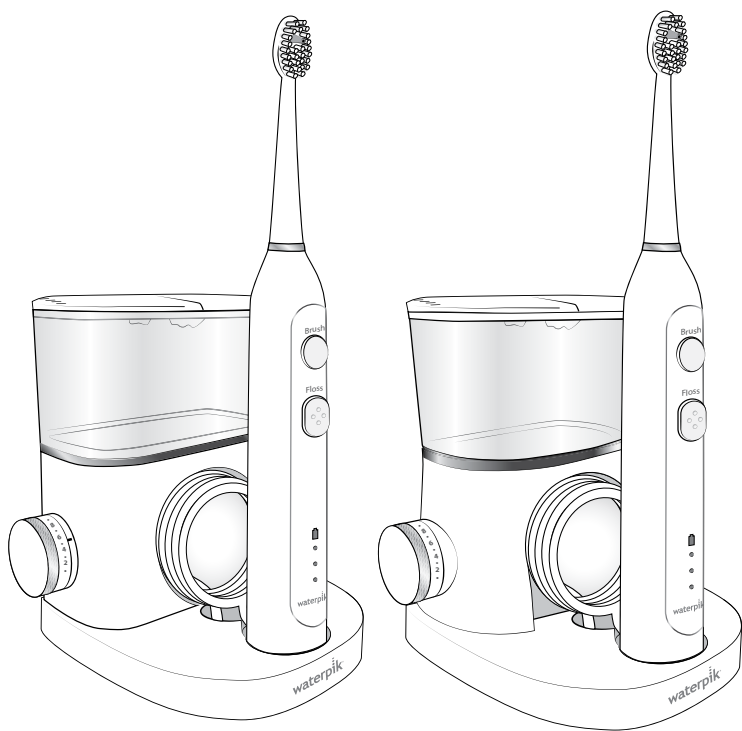


waterpik®

Waterpik® Sonic-Fusion® Models SF-01 | SF-02



www.waterpik.co.uk

IMPORTANT SAFEGUARDS

IMPORTANT SAFEGUARDS

READ ALL INSTRUCTIONS BEFORE USING.

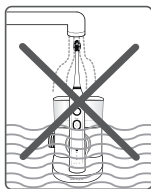
- This product is for household use.

When using electrical products, especially when children are present, basic safety precautions should always be followed, including the following:

DANGER:

To reduce the risk of electrocution:

- Do not handle plug with wet hands.
- Do not place in or drop into water or other liquid.
- Do not use while bathing.
- Do not place or store product where it can fall or be pulled into a tub or sink.
- Do not reach for a product that has fallen into water. Unplug immediately.
- Check the power supply cord for damage before the first use and during the life of the product.
- The supply cord cannot be replaced. If the cord is damaged the appliance should be scrapped.



WARNING:

To reduce the risk of burns, electrocution, fire, or injury to persons:

- Do not plug this device into a voltage system that is different from the voltage system specified on the device.
- If product is opened/disassembled for ANY reason, warranty is **VOID**.
- Do not use this product if it has a damaged cord or plug, if it is not working properly, if it has been dropped or damaged, or dropped into any liquid. Contact Water Pik, International, Inc. UK Service Centre at +44 (0) 333 123 5677.
- Do not direct water under the tongue, into the ear, nose or other delicate areas. This product is capable of producing pressures that may cause serious damage in these areas.
- Use this product only as indicated in these instructions or as recommended by your dental professional.
- Only use flossing brush heads and accessories recommended by Water Pik, Inc.
- Do not drop or insert any foreign object into any opening or hose.
- The power handle should only be used with the charging base provided.

- Keep electrical cord away from heated surfaces.
- Do not use outdoors or operate where aerosol (spray) products are being used or where oxygen is being administered.
- Fill reservoir with water or other dental professional recommended solutions only.
- Remove any oral jewelry prior to use.
- Do not use if you have an open wound on your tongue or in your mouth.
- If your physician or cardiologist has advised you to receive antibiotic premedication before dental procedures, you should consult your dentist and/or medical professional before using this product or any other oral hygiene aid.
- Do not use iodine or water insoluble concentrated essential oils in this product. Use of these can reduce product performance and will shorten the life of the product. Use of these products may void warranty.
- Close supervision is necessary when this product is used by, on or near children or invalids.
- Magnetic field: Pacemakers and similar implanted medical devices may be affected by magnet.
- Do not use the toothbrush motor for more than 5 minutes in each 10 minute period.
- Using toothpastes containing peroxide may damage the plastic housing of this product.
- Using abrasive or chemical cleaners may damage the plastic housing of this product.
- Closely instruct and supervise children 8 years and above and individuals with special needs in the proper use of this product.
- Children should be supervised to ensure that they do not play with the appliance.
- This product does not contain any user serviceable parts. Do not attempt to open except for battery disposal. See "Battery Removal" section.
- Fill Water Flosser reservoir with warm water or other dental professional recommended solutions only.
- **IMPORTANT** This device uses wireless communication to control the ON/OFF function of the water flosser pump motor from the toothbrush power handle. This device was designed for Home or Office use. To avoid electromagnetic interference, do not operate this device in restricted locations such as aircrafts or specially marked areas in hospitals.

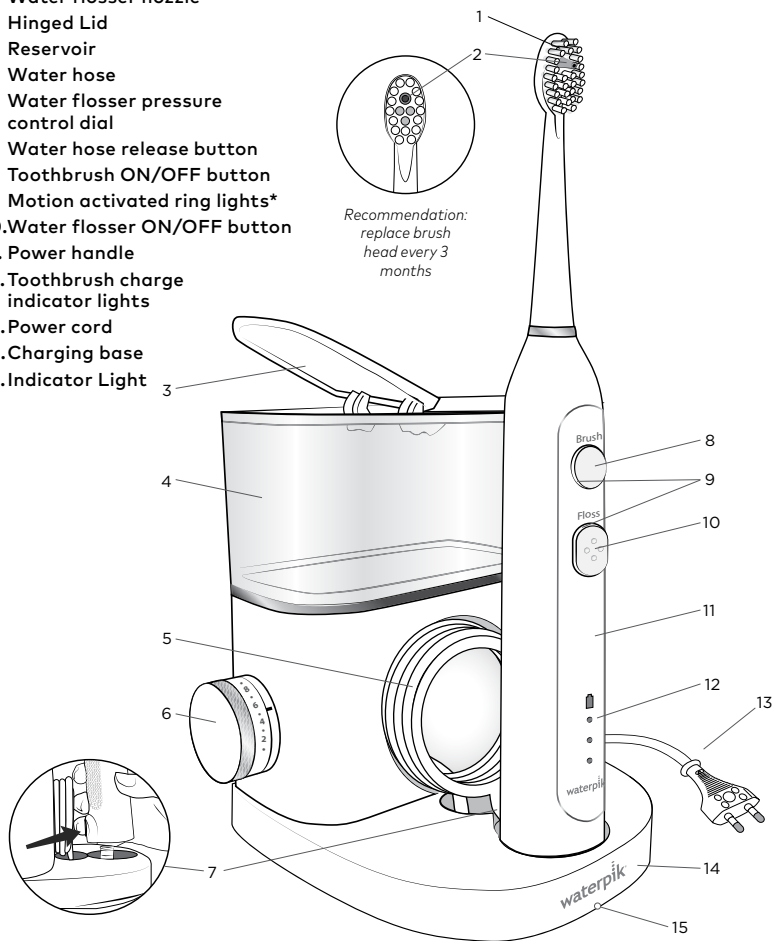
SAVE THESE INSTRUCTIONS

TABLE OF CONTENTS

Product Description	5
Preparing The Unit/Brushing and Flossing	6
Care and Maintenance	8
Limited Three-Year Warranty	10

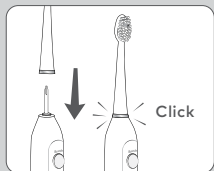
PRODUCT DESCRIPTION

1. Brush head
2. Water flosser nozzle
3. Hinged Lid
4. Reservoir
5. Water hose
6. Water flosser pressure control dial
7. Water hose release button
8. Toothbrush ON/OFF button
9. Motion activated ring lights*
10. Water flosser ON/OFF button
11. Power handle
12. Toothbrush charge indicator lights
13. Power cord
14. Charging base
15. Indicator Light



*select models only

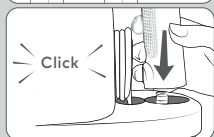
PREPARING THE UNIT / BRUSHING AND FLOSSING



Preparing the Unit

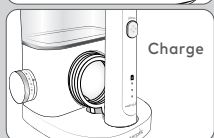
Powering the Unit

Plug the cord into an electrical outlet. If the outlet is controlled by a wall switch, be sure it is turned on.



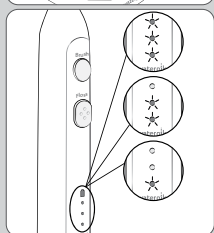
Attaching the Brush Head to the Power Handle

Position the brush head on the power handle as shown. Press firmly until it clicks into place. To remove, firmly pull the brush head to separate it from the power handle.



Attaching the Power Handle to the Hose

Position the power handle onto hose in the base. Press the power handle firmly onto the hose attachment until it clicks into place. To remove, simply press the round button on the back side of the power handle.

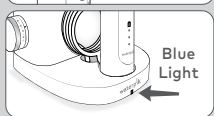


Charging the Sonic-Fusion®

Charge for at least 20 minutes before first use by placing the handle on the charging base. For a full charge, leave the handle on the charging base for at least 4 hours. A full charge should last 14 uses with a duration of 2 minutes each. If the toothbrush is to be stored for an extended period of time (six months or more), be sure to fully charge it (at least 4 hours) prior to storage.

Charge Lights

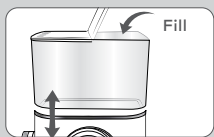
Toothbrush charge indicator lights will indicate level of battery charge for approximately 10 seconds after removal from the charging base and after use, and will then turn off. If only the bottom light is lit, then recharging is recommended to ensure uninterrupted use.



Indicator Light

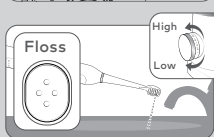
The blue light blinks when:

- The unit is first plugged in
- The handle is placed in charger
- The handle is removed from the charger
- A wireless command is received



Preparing the Reservoir

Remove reservoir and open hinged lid. Fill the reservoir with warm water. Close the lid and replace the reservoir on the base and press firmly.



Prime Unit (First Time Use Only)

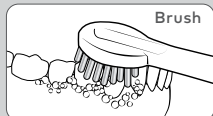
Point the brush head tip into the sink. Press the Floss button and repeatedly rotate the pressure control dial between low and high until water flows.

After water flows from the nozzle, press the FLOSS button to turn water OFF.



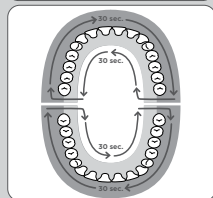
Brushing

Place the brush head in your mouth before pressing the BRUSH button.



Recommended Technique

For best results, position brush along gumline at a 45-degree angle. Press the BRUSH button to turn the brush ON. Use light pressure and move the toothbrush slowly allowing for the sonic action to clean each tooth individually. Brush can be easily disconnected from the hose if desired (See diagram on product description page).

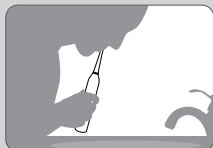


Quad Timer

The Sonic-Fusion® will create a short pause every 30 seconds to remind you to move to the next section of your mouth. You will brush the outside of the teeth for 30 seconds and then the inside for 30 seconds. This will be repeated on the other arch for a total of 2 minutes to clean all teeth.

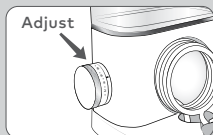
2-Minute Timer

The brush will automatically shut off after 2 minutes of run time.



Water Flossing

Always place the brush head in your mouth prior to pressing the FLOSS button. Lean over the sink and slightly close lips enough to prevent splashing while still allowing water to flow from mouth into sink.



Adjusting the Pressure Setting

Turn the water flosser pressure control dial on the base of the unit to the lowest setting (pressure setting No. 1) for first-time use. Gradually increase pressure over time to the setting you prefer – or as instructed by your dental professional.



Recommended Technique

For best results, start with the back teeth and work toward the front teeth. Direct the brush head so that the water flosser nozzle is angled slightly toward the gumline. Move the brush head along the gumline pausing briefly between each tooth to allow water to clean between teeth. Continue until you have cleaned the inside and outside of both the upper and lower teeth. When finished, empty any liquid left in the reservoir.

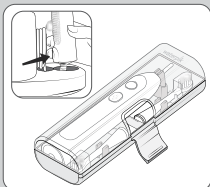
NOTE: If you used mouthwash or any other solution besides water, see "Using Mouthwash and Other Solutions" section.



Brush + Floss

To Brush + Floss at the same time, place brush head in mouth. Press brush button, then press floss button.

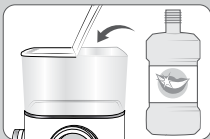
CARE AND MAINTENANCE



Travel and Hose-Free Brushing

Toothbrush can be disconnected from the Sonic-Fusion® for travel or hose-free brushing. Place the handle and desired brush head(s) in the provided case for protection when traveling.

NOTE: To disconnect the toothbrush from the water hose, press the round button on the back side of the power handle.



Using Mouthwash and Other Solutions

Your Waterpik® Sonic-Fusion® can be used to deliver mouthwash and antibacterial solutions. After using any special solution, rinse unit to prevent clogging by partially filling reservoir with warm water and running unit with brush head pointed into sink.

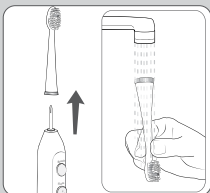
Care and Maintenance

Before cleaning, unplug from the electrical outlet.

After Each Use

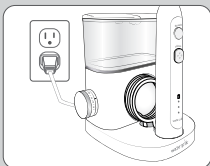
1. After each use, when all functions are turned OFF, remove the brush head from the handle and rinse brush head and handle under running water.
2. Wipe the handle dry after each use.
3. **Store handle on charger and keep unit plugged in.**

The unit will not overcharge.



General Cleaning / Removing Hard Water Deposits

- Clean the product when necessary by using a soft cloth and mild non-abrasive cleanser.
- Hard water deposits may build up in your unit, depending on the mineral content of your water. If left unattended, it can hinder performance. Cleaning internal parts: add 2 tablespoons of white vinegar to a full reservoir of warm water. Point the handle and brush head into sink. Turn Water Flosser ON and run until reservoir is empty. Rinse by repeating with a full reservoir of clean warm water. This process should be done every 1 to 3 months to ensure optimal performance.



Toothbrush Low Charge Lock Out

The toothbrush charge indicator lights will flash if the battery charge is too low for brushing. This may cause the toothbrush to enter Lock Out mode. To clear the Lock Out, place the power handle on the charging base.

Leakage

If leaking due to a damaged hose, please contact Water Pik, International, Inc. UK Service Centre at +44 (0) 333 123 5677.

Multiple Unit Proximity

To avoid wireless communication interference when more than one unit will be used in proximity, go to (waterpik.com/MUP) for instruction for changing the base and handle ID.

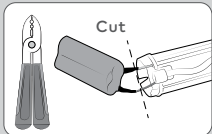
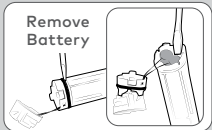
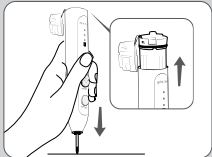
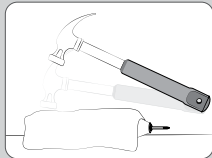
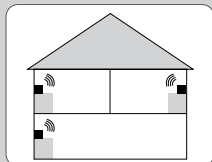
Battery Removal

This product contains rechargeable Nickel Metal Hydride batteries. **The batteries are not replaceable.** Please do not dispose of the unit in the household waste. Remove the batteries per the instructions below and recycle at your local recycling center.

Note: This process is not reversible

Remove the battery only at the end of the product's life for recycling. Doing so earlier will destroy the product. Deplete the battery charge until the brush no longer operates. Observe basic safety precautions to protect your eyes, hands, fingers, and work surface. Remove the batteries as shown and recycle them and the rest of the product according to local regulations.

1. Run down the battery by operating the brush button until the motor does not run.
2. Obtain a towel or cloth, hammer, flat-head screwdriver, and wire cutters.
3. Remove and discard the brush head.
4. Cover the handle entirely with the towel or cloth.
5. Clamp the top of the handle against your work surface with one hand and strike the handle housing around the bottom perimeter on all sides to release the end cap latch. Continue striking and rotating the handle until the end cap releases.
6. Remove the internal components by turning the handle upside down and while holding on to the handle housing, press the shaft down firmly on a hard surface.
7. The internal components should slide out when the handle is positioned upside-down. If this does not occur, repeat steps 5 and 6 until the components release.
8. Remove the end cap from the internal assembly.
9. Slide the battery out of the internal assembly.
10. Cut the battery wires one at a time with the wire cutters.
11. Recycle and dispose of the battery properly.
12. The remaining product pieces should be discarded appropriately.



LIMITED THREE-YEAR WARRANTY

Service Maintenance

Waterpik® Water Flossers have no consumer-serviceable electrical items and do not require routine service maintenance. For all your service needs please call the Waterpik International, Inc. UK Customer Service Centre at +44 (0) 333 123 5677. Some replacement parts and accessories for the Water Flosser are also available at www.waterpik.co.uk. For questions or problems please call the customer service centre before returning the product. Please do not send your unit to the Waterpik International, Inc. address as this can cause lengthy delays. Refer to the serial and model numbers in all correspondence. These numbers are located on the bottom of your unit.

Water Pik, Inc. warrants to the original consumer of this product that it is free from defects in materials and workmanship for 3 years from the date of purchase.

Save your receipt as your proof of purchase date. Water Pik, Inc. reserves the right to request the product to be returned for analysis to confirm the claim falls within our warranty policy. Water Pik, Inc. will replace, at its discretion, the product provided the product has not been abused, misused, altered or damaged after purchase, was used according to instructions, and was used only with accessories or consumable parts approved by Water Pik, Inc. This limited warranty excludes accessories or consumable parts such as tips and brush heads. This warranty gives you specific legal rights. You may also have other rights that vary depending on the law in your place of residence. Contact Water Pik, International, Inc. UK Service Centre at +44 (0) 333 123 5677.

waterpik®

**Water Pik, Inc., a subsidiary
of Church & Dwight Co., Inc.**
1730 East Prospect Road
Fort Collins, CO 80553-0001 USA
844-821-4873
www.waterpik.com



SOFIBEL SAS
92686 Levallois-Perret Cedex-France

Church & Dwight UK LTD.,
Folkestone, CT19 6PG
UK: 0800 121 6080

Made in China. Designed and tested in the U.S.A.