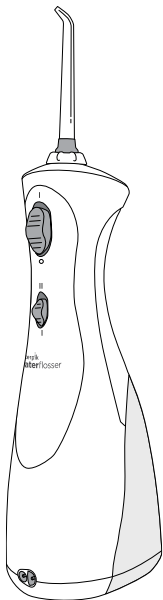


**waterpik®**



## **Waterpik® Water Flosser Model WP-400 Series**

[www.waterpik.co.uk](http://www.waterpik.co.uk)

# IMPORTANT SAFEGUARDS

## READ ALL INSTRUCTIONS BEFORE USING.

- This product is for household use.

When using electrical products, especially when children are present, basic safety precautions should always be followed, including the following:

## DANGER:

### To reduce the risk of electrocution:

- Do not handle charger with wet hands.
- Do not place charger in or drop charger into water or other liquid.
- Do not use while bathing.
- Do not place or store product where it can fall or be pulled into a bath or sink.
- Do not reach for a product that has fallen into water. Unplug immediately.
- Check the charger cord for damage before the first use and during the life of the product.

## WARNING:

### To reduce the risk of burns, electrocution, fire, or injury to persons:

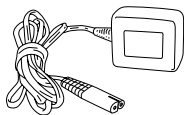
- Do not plug this device into a voltage system that is different from the voltage system specified on the device or charger.
- Do not charge this unit with any charging devices other than the one provided.
- Do not use this product if it has a damaged cord or plug, if it is not working properly, if it has been dropped or damaged, or dropped into water. Contact Water Pik, Inc. UK Service Centre at +44 (0) 333 123 5677 or visit [www.waterpik.co.uk](http://www.waterpik.co.uk) for more information.
- Do not direct water under the tongue, into the ear, nose or other delicate areas. This product is capable of producing pressures that may cause serious damage in these areas.
- Use this product only as indicated in these instructions or as recommended by your dental professional.
- Only use tips and accessories that are recommended by Water Pik, Inc.

- Do not drop or insert any foreign object into any opening on the product.
  - Keep charging unit and cord away from heated surfaces.
  - Do not use outdoors or operate where aerosol (spray) products are being used or where oxygen is being administered.
  - Do not use iodine, saline (salt solution), or water insoluble concentrated essential oils in this product. Use of these can reduce product performance and will shorten the life of the product.
  - Remove any oral jewelry prior to use of this product.
  - Do not use if you have an open wound on your tongue or in your mouth.
  - If your physician advised you to receive antibiotic premedication before dental procedures, you should consult your dentist before using this instrument or any other oral hygiene aid.
  - Fill reservoir with warm water or other dental professional recommended solution only.
  - There are no consumer serviceable parts in this appliance and it does not require maintenance.
- This appliance can be used by children aged from 8 years and above and persons with reduced physical, sensory or mental capabilities or lack of experience and knowledge if they have been given supervision or instruction concerning use of the appliance in a safe way and understand the hazards involved. Children shall not play with the appliance. Cleaning and user maintenance shall not be made by children without supervision.
  - If the supply cord is damaged, it must be replaced by a special cord or assembly available from the manufacturer or its service agent.

**SAVE THESE  
INSTRUCTIONS**

Product Description	5
Getting Started	6
Cleaning and Troubleshooting Your Waterpik® Water Flosser	9
Battery Removal	10
Limited Two Year Warranty	12

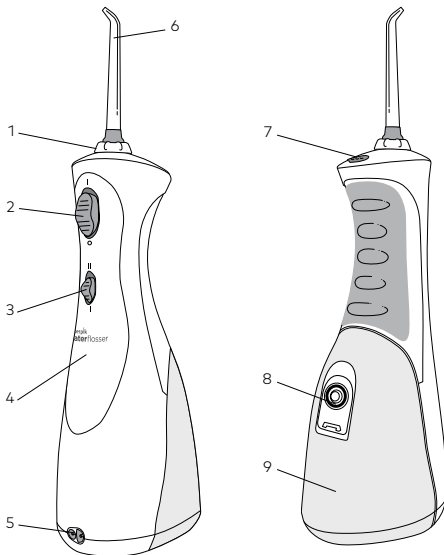
1. Tip rotator
2. Power switch
3. Pressure control
4. Power handle
5. Charger inlet
6. Tip
7. Tip eject button
8. Flip top water inlet
9. Reservoir



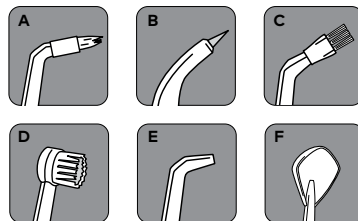
#### Charger

Waterpik® p/n 20015749 (White)

Waterpik® p/n 20019093 (Black)



#### NOT ALL TIPS INCLUDED IN ALL MODELS

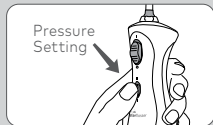
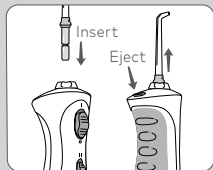
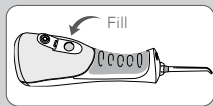


\*Replace Every 3 months \*\*Replace Every 6 months

#### TIPS

- A. Orthodontic Tip\***  
- Braces/General use
- B. Pik Pocket™ Tip\***  
- Periodontal pockets/  
Furcations
- C. Plaque Seeker™ Tip\***  
- Implants/Crowns/Bridges/  
Retainers/General use
- D. Toothbrush Tip\***  
- General use
- E. Classic Jet Tip\*\***  
- General use
- F. Tongue Cleaner\*\***  
- Fresher breath

Replacement/attachments may be purchased directly from Water Pik, Inc.  
UK Customer Service Centre at +44 (0) 333 123 5677 or from [www.waterpik.co.uk](http://www.waterpik.co.uk).



Plug the cord into any standard electrical outlet. Make sure you push the switch into the OFF (O) position before charging. The unit will not charge if the switch is in the ON (I) position. See "Cleaning and Troubleshooting Your Waterpik® Water Flosser" for guidance on how to look after your battery. The Waterpik® Water Flosser will stay charged for up to 2 weeks depending on use.

### Filling the Reservoir

Remove the charger from the unit prior to filling reservoir and product use. Lift flip top on reservoir and fill the reservoir with lukewarm water.

### Inserting and Removing Tips

Insert tip into the center of the knob at the top of the Water Flosser handle. Press firmly until the tip clicks into place. To remove the tip from the handle, press the tip eject button and pull tip from the handle.

**CAUTION: Do not press tip eject button while unit is running.**

### Adjusting the Pressure Setting

You can adjust the pressure setting on your Water Flosser by sliding pressure control on the handle. Start with the lowest setting and increase to your liking.



### Recommended Technique

Lean low over sink and place tip in mouth. Aim the tip toward gumline, and turn the unit ON (I).

For best results, start with the back teeth and work toward the front teeth. Glide tip along gumline and pause briefly between teeth. Continue until you have cleaned the inside and outside of both the upper and lower teeth.

Direct the jet stream at a 90-degree angle to your gumline. **Slightly close lips to avoid splashing** but allow water to flow freely from mouth into the sink. Keep unit upright during use for best results.

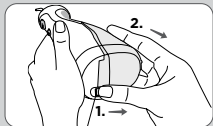


### When Finished

Turn the unit OFF (O). Empty any liquid left in the reservoir.

If desired, the reservoir may be removed from the power handle by sliding the reservoir release latch to the unlock position(1) and then sliding the reservoir down towards the base of the unit(2).

To replace the reservoir on the power handle, simply slide it up towards the top of the unit. The reservoir will snap into place when fully engaged.



## NOTE: NOT ALL TIPS INCLUDED WITH ALL MODELS.

### TIP USAGE

#### Pik Pocket™ Tip

The Pik Pocket™ tip is specifically designed to deliver water or anti-bacterial solutions deep into periodontal pockets.

To use the Pik Pocket™ tip, **set the unit to the lowest pressure setting**. Place the soft tip against a tooth at a 45-degree angle and gently place the tip under the gumline, into the pocket.

#### Tongue Cleaner Tip

Set to lowest pressure setting, place tip in the center/middle of your tongue about half way back. Pull forward with light pressure. Increase pressure as you prefer.

#### Orthodontic Tip

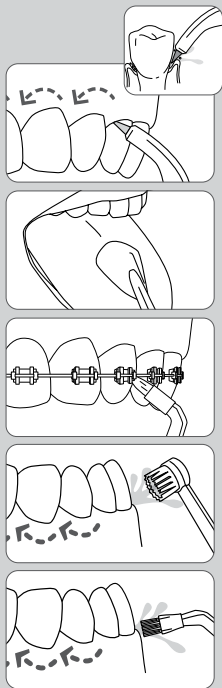
To use the orthodontic tip, gently glide tip along gumline, pausing briefly to lightly brush area between teeth and all around orthodontic bracket, before proceeding to the next tooth.

#### Toothbrush Tip

Place the toothbrush tip in mouth with the brush head on the tooth at the gumline. The toothbrush tip can be used with or without toothpaste. Using a **light pressure** (bristles should not bend) massage the brush back and forth with very short strokes – much like you would with a manual toothbrush.

#### Plaque Seeker™ Tip

To use the Plaque Seeker™ tip, place the tip close to the teeth so that the bristles are gently touching the teeth. Gently glide tip along gumline, pausing briefly between teeth to gently brush and allow the water to flow between the teeth.





### **Using Mouthwash and Other Solutions**

Your Waterpik® Water Flosser can be used to deliver mouthwash and antibacterial solutions. After using any special solution, rinse unit to prevent clogging by partially filling reservoir with warm water and running unit with tip pointed into sink until unit is empty.

### **Cleaning**

Never immerse unit in water. Before cleaning, unplug from the electrical outlet. Clean the product when necessary by using a soft cloth and mild non-abrasive cleanser to wipe exterior.

The water reservoir is removable for easy cleaning and is top rack dishwasher safe. It is recommended that the reservoir is removed and cleaned weekly.

### **Removing Hard Water Deposits / General Cleaning**

Hard water deposits may build up in your unit, depending on the mineral content of your water. If left unattended, it can hinder performance.

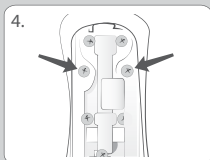
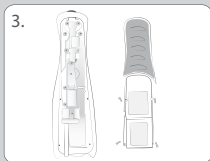
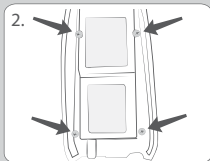
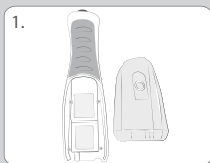
Cleaning internal parts: add 1 tablespoon of white vinegar to a full reservoir of warm water. Point the handle and tip into sink. Turn unit ON and run until reservoir is empty. Rinse by repeating with a full reservoir of clean warm water.

This process should be done every 1 to 3 months to ensure optimal performance.

### **Battery Care and Disposal**

The unit will not charge if the switch is in the ON (I) position. If you use your Water Flosser once a day or less, it is recommended you charge it overnight, once a week. If you use it twice a day or more, charge the unit more frequently. Do not run the batteries down completely as this may shorten the lifespan of the batteries and will require charging the unit for 24 hours to obtain a full charge.

If the Water Flosser is to be stored for an extended period of time (six months or more), be sure to fully charge it prior to storage. The unit contains a Nickel Metal Hydride battery. At the end of the battery life, please recycle the unit at your nearest recycle center per local or state requirements. The battery is not replaceable.



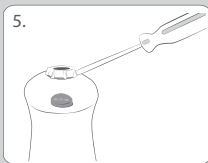
### Battery Disposal

The product contains battery and/or recyclable electronic waste. In order to protect the environment, please do not dispose along with household waste. When battery life ends, please dispose or recycle according to local administrative regulations.

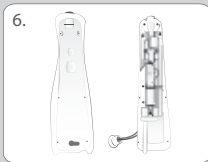
Please contact local waste administrative department for any questions.

The power should be cut off before removing the battery. If you intend to dispose the battery on your own, for example, for WP-400 series models, please discharge battery fully before removal and follow below steps to remove battery:

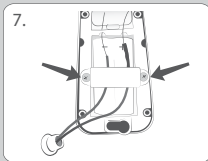
1. Power off the device, pull the reservoir release latch and take out the reservoir.
2. Remove four screws.
3. Remove back handle.
4. Remove two screws.



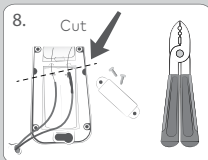
5. Remove tip rotator by prying it off with a flat blade screwdriver.



6. Remove chassis from unit.



7. Flip chassis over to expose battery. Remove two screws.



8. Cut these two wires and pry battery out of chassis.

The removed battery should be disposed safely by special recycling center.

**WARNING:** The battery of this product is not replaceable. Please do not disassemble the product unless you want to dispose it.

Otherwise the warranty service will be void.

**Service Maintenance**

Waterpik® Water Flossers have no consumer serviceable electrical items and do not require routine service maintenance. For all your service needs please call the Water Pik, Inc. UK Customer Service Centre at +44 (0) 333 123 5677. Some replacement parts and accessories for the Water Flosser are also available at [www.waterpik.co.uk](http://www.waterpik.co.uk). For questions or problems please call the customer service centre before returning the product.

Refer to the serial and model numbers in all correspondence. These numbers are located on the back of the handle and bottom of the reservoir respectively.

Still have questions? Go to [www.waterpik.co.uk](http://www.waterpik.co.uk).

**Warranty**

Water Pik, Inc. warrants to the original consumer of this new product that it is free from defects in materials and workmanship for 2 years from the date of purchase. Consumer will be required to submit the original purchase receipt as proof of purchase date and if requested, the entire product, to support a warranty claim. Water Pik, Inc. will replace at its discretion the product, which in its opinion is defective, provided the product has not been abused, misused, altered or damaged after purchase, was used according to instructions, and was used only with accessories or consumable parts approved by Water Pik, Inc. This limited warranty excludes accessories or consumable parts such as tips, etc.

This warranty gives you specific legal rights. You may also have other rights that vary, depending on the law in your place of residence.



# waterpik®

**Water Pik, Inc., a subsidiary  
of Church & Dwight Co., Inc.**



1730 East Prospect Road  
Fort Collins, CO 80553-0001 USA  
844-821-4873

[www.waterpik.com](http://www.waterpik.com)

EC REP



SOFIBEL SAS  
110-114 Rue Victor Hugo  
92686 Levallois-Perret Cedex-France



UK Responsible Person  
Church & Dwight UK Limited,  
Wear Bay Road,  
Folkestone,  
Kent CT19 6PG  
United Kingdom

Designed and tested in the US. Made in China.

Form No. 20030512-F AA

©2021 Water Pik, Inc.