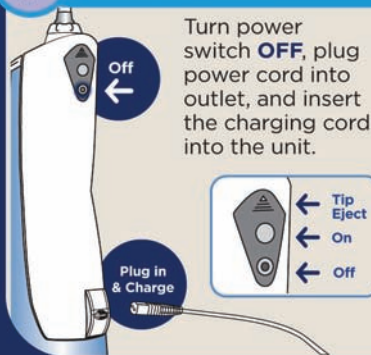
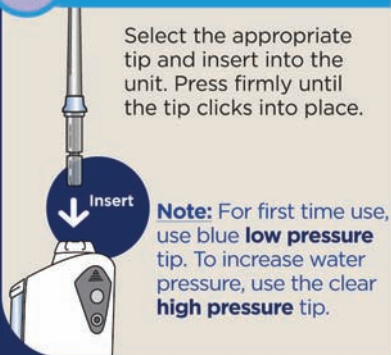


## QUICK START GUIDE

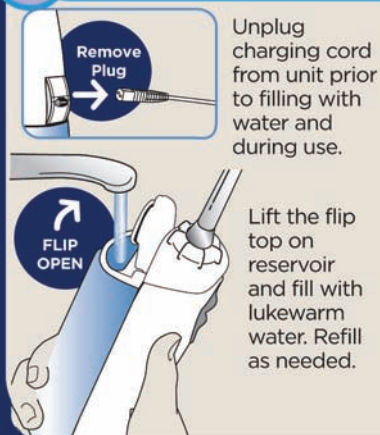
### 1 Charge Unit for 24 Hours Prior to First Use.



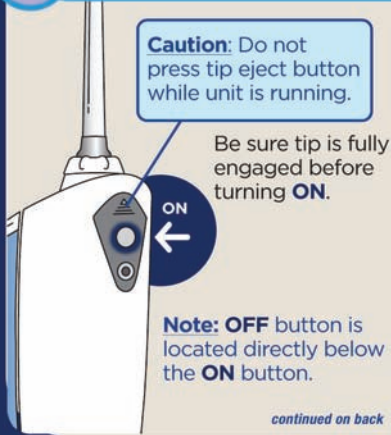
### 2 Insert Tip:



### 3 Fill the Reservoir:



### 4 Usage:



## 5 On/Off Procedure:

Always place tip in mouth before turning unit on.

Lean over sink and close lips enough to prevent splashing, while still allowing water to flow from mouth into the sink. Turn unit **ON (I)**.



Keep unit upright during use to ensure continuous water flow.

## 6 Technique Tips for Best Results:

Aim the tip just above the gumline at a 90 degree angle.



Starting with the back teeth, follow the gumline and pause briefly between teeth.

Continue until all areas around and between teeth have been cleaned.

## 7

**REGISTER  
YOUR  
PRODUCT  
ONLINE NOW!**

Receive up to  
**£45**  
in savings.

[www.waterpik.co.uk/  
registration](http://www.waterpik.co.uk/registration)

For product questions and spare parts, please contact  
Waterpik International customer services on: +44 (0) 844 335 6354

[www.waterpik.co.uk](http://www.waterpik.co.uk)  
©2010 Water Pik, Inc.  
FN20013498-F AA