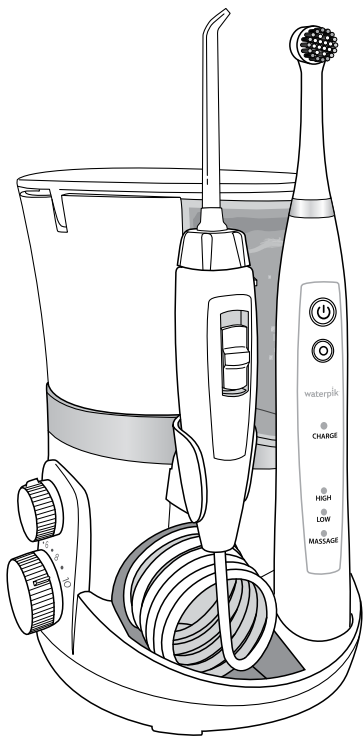


waterpik®

**Waterpik® Water Flosser
plus Oscillating Toothbrush
Model WP-810/811/812**



.....
www.waterpik.co.uk

TABLE OF CONTENTS

Important Safeguards	3
Product Description	5
Getting Started With Your Water Flosser	6
Cleaning and Troubleshooting Your Waterpik® Water Flosser	8
Water Flosser Limited Two-Year Warranty	9
Getting Started with Your Toothbrush	10
Care of Your Toothbrush	10
Toothbrush Limited Two-Year Warranty	11

IMPORTANT SAFEGUARDS

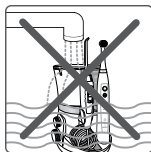
When using electrical products, especially when children are present, basic safety precautions should always be followed, including the following:

READ ALL INSTRUCTIONS BEFORE USING.

DANGER:

To reduce the risk of electrocution:

- Do not handle plug with wet hands.
- Do not place in or drop into water or other liquid.
- Do not use while bathing.
- Do not place or store product where it can fall or be pulled into a tub or sink.
- Do not reach for a product that has fallen into water. Unplug immediately.
- Check the power supply cord for damage before the first use and during the life of the product.



WARNING:

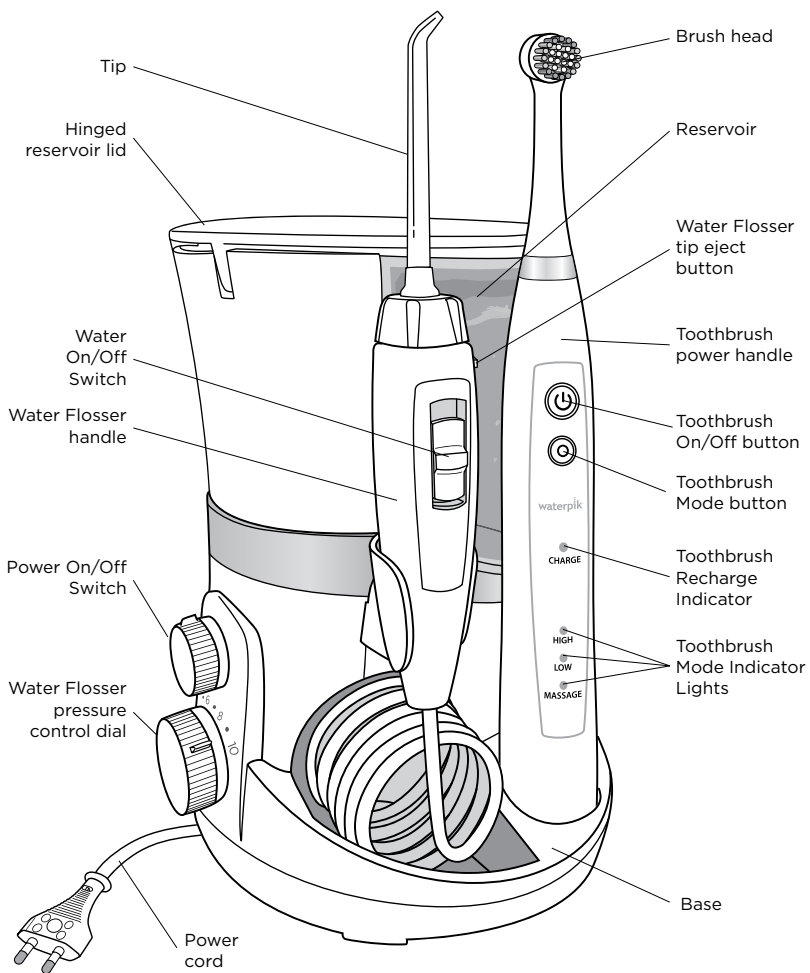
To reduce the risk of burns, electrocution, fire, or injury to persons:

- Do not plug this device into a voltage system that is different from the voltage system specified on the device or charger. **Use with improper voltage will damage product and VOID warranty.**
- If product is opened/disassembled for ANY reason, warranty is VOID.
- Do not use this product if it has a damaged cord or plug, if it is not working properly, if it has been dropped or damaged, or dropped into any liquid. Contact Water Pik, Inc. or your local distributor which can be found at www.waterpik.com/intl.
- Do not direct water from the Water Flosser under the tongue, into the ear, nose or other delicate areas. This product is capable of producing pressures that may cause serious damage in these areas.
- Use this product only as indicated in these instructions or as recommended by your dental professional.
- Only use tips and accessories recommended by Water Pik, Inc.
- Do not drop or insert any foreign object into any opening or hose.
- Keep electrical cord away from heated surfaces

- Do not use Water Flosser or Toothbrush outdoors or operate where aerosol (spray) products are being used or where oxygen is being administered.
- Do not use iodine or water insoluble concentrated essential oils in the Water Flosser. Use of these can reduce product performance and will shorten the life of the product.
- Remove any oral jewelry prior to use of the Water Flosser or Toothbrush.
- Do not use either the Water Flosser or Toothbrush if you have an open wound on your tongue or in your mouth.
- If your physician or cardiologist has advised you to receive antibiotic premedication before dental procedures, you should consult your dentist and/or medical professional before using the Water Flosser or Toothbrush or any other oral hygiene aid.
- This product complies with the safety standards for electromagnetic devices. If you have a pacemaker or other implanted device containing magnets or electronics, contact your physician or the device manufacturer prior to using the Toothbrush.
- If the Pik Pocket® tip (not included in all models) separates from the shaft for any reason, discard tip and shaft and replace with new Pik Pocket® tip.
- Do not use the Water Flosser for more than 5 minutes in each two-hour period.
- This product does not contain any user serviceable parts in the toothbrush handle or Water Flosser unit. Do not attempt to open either component except for battery disposal. See Battery Removal section.
- Using toothpastes containing baking soda or peroxide, abrasive or chemical cleaners may damage the plastic housing of this product.
- Closely instruct and supervise children 8 years and above and individuals with special needs in the proper use of this product.
- Children should be supervised to ensure that they do not play with the appliance.
- There are no consumer serviceable parts in this appliance and it does not require maintenance.
- Fill reservoir with water or other dental professional recommended solutions only.

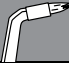



SAVE THESE INSTRUCTIONS.


PRODUCT DESCRIPTION



GETTING STARTED WITH YOUR WATER FLOSSER

NOTE: ALL TIPS AND BRUSH HEADS NOT INCLUDED IN ALL MODELS.

Replace Every 3 Months	
Orthodontic Tip	BEST FOR
	<input checked="" type="checkbox"/> Braces <input checked="" type="checkbox"/> General Use
Pik Pocket® Tip	BEST FOR
	<input checked="" type="checkbox"/> Periodontal Pockets <input checked="" type="checkbox"/> Furcations
Plaque Seeker® Tip	BEST FOR
	<input checked="" type="checkbox"/> Implants <input checked="" type="checkbox"/> Retainers <input checked="" type="checkbox"/> Crowns <input checked="" type="checkbox"/> General Use <input checked="" type="checkbox"/> Bridges
Triple Clean Brush Head	BEST FOR
	<input checked="" type="checkbox"/> Plaque Removal

Replace Every 6 Months	
Classic Jet Tip	BEST FOR
	<input checked="" type="checkbox"/> General Use
Tongue Cleaner	BEST FOR
	<input checked="" type="checkbox"/> Fresher Breath

All tips not included in all models.

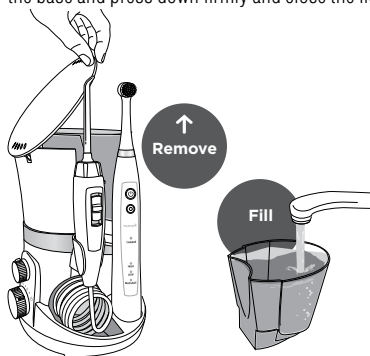
Replacement tips/attachments may be purchased directly from Waterpik International, Inc.
Call Tel +44 (0) 333 123 5677.

Powering the Unit

Plug the cord into an electrical outlet. If the outlet is controlled by a wall switch, be sure it is turned on.

Preparing the Reservoir

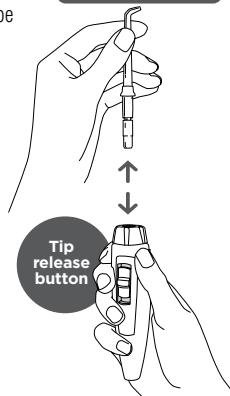
Lift the reservoir lid, remove the reservoir, and fill with lukewarm water. Replace the reservoir over the base and press down firmly and close the lid.



Inserting and Removing Tips

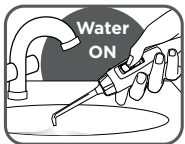
Insert tip into the center of the Water Flosser handle, pressing down firmly until the tip clicks into place.

The colored ring will be flush with the top of the handle if the tip is correctly locked into place. To remove tip from the handle push the tip eject button on the handle.



Prime Unit (First Time Use Only)

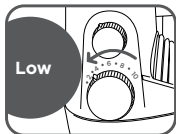
Set pressure control dial on base to high (pressure setting No.10), point the handle and tip into sink. Turn power and water ON until water flows from the tip. Turn unit OFF.



Adjusting the Pressure Setting

Turn the pressure control dial on the base of the unit to the lowest setting (pressure setting No.1) for first-time use.

Gradually increase pressure over time to the setting you prefer – or as instructed by your dental professional.



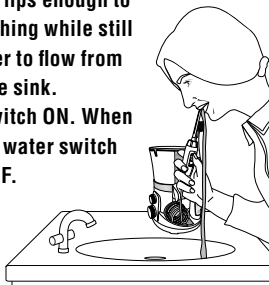
Using the Water Flosser

Always place the tip in your mouth before turning the water ON.

With water switch on handle in OFF position, turn power on. **Lean over sink and**

slightly close lips enough to prevent splashing while still allowing water to flow from mouth into the sink.

Turn water switch ON. When finished, turn water switch and power OFF.



During use you can stop the flow of water by sliding the water switch on handle to the OFF position.

NOTE: Motor will continue to run.



Recommended Technique

For best results, start with back teeth and work toward the front teeth.

Direct the stream at a 90-degree angle to your gumline with



tip in mouth. Glide tip along gumline and pause briefly between teeth. Continue until you have cleaned the inside and outside of both the upper and lower teeth. Lean over sink.

When Finished

Turn the unit OFF. Empty any liquid left in the reservoir. Unplug the unit.

NOTE: If you used mouthwash or other solution besides water, see "Using Mouthwash and Other Solutions" section.

TIP USAGE**Pik Pocket® Tip**

The Pik Pocket® Tip is specifically designed to deliver water or anti-bacterial solutions deep into periodontal pockets.

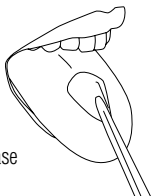


To use the Pik Pocket® Tip, **set the unit to the lowest pressure setting.**

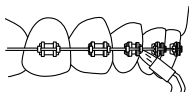
Place the soft tip against a tooth at a 45-degree angle and gently place the tip under the gumline, into the pocket.

**Tongue Cleaner Tip**

To use the tongue cleaner tip, set to lowest pressure setting, place tip in the center/middle of your tongue about half way back and start the Water Flosser. Pull forward with light pressure. Increase pressure as you prefer.

**Orthodontic Tip**

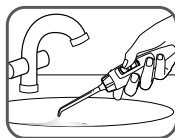
To use the Orthodontic Tip, gently glide tip along gumline, pausing briefly to lightly brush area between teeth and all around orthodontic bracket, before proceeding to the next tooth.

**Plaque Seeker® Tip**

To use the Plaque Seeker® Tip, place the tip close to the teeth so that the bristles are gently touching the teeth. Gently glide tip along gumline, pausing briefly between teeth to gently brush and allow the water to flow between the teeth.

**Using Mouthwash and Other Solutions**

Your Waterpik® Water Flosser can be used to deliver mouthwash and antibacterial solutions. After using any special solution, rinse unit to prevent clogging by partially filling reservoir with warm water and running unit with tip pointed into sink until unit is empty.

**Cleaning**

Before cleaning, unplug from the electrical outlet. Clean the product when necessary by using a soft cloth and mild non-abrasive cleanser.

The reservoir is removable for easy cleaning and is top rack dishwasher safe.

Removing Hard Water Deposits / General Cleaning

Hard water deposits may build up in your unit, depending on the mineral content of your water. If left unattended, it can hinder performance. Cleaning internal parts: add 2 tablespoons of white vinegar to a full reservoir of warm water. Point the handle and tip into sink. Turn unit ON and run until reservoir is empty. Rinse by repeating with a full reservoir of clean warm water. This process should be done every 1 to 3 months to ensure optimal performance.

Leakage

If leaking due to a damaged hose, replacement hoses and handles can be purchased at www.waterpik.co.uk or contact Water Pik Inc. customer service for a self service repair kit.

Service Maintenance

Waterpik® Water Flossers have no consumer serviceable electrical items and do not require routine service maintenance. For all your service needs please call the Waterpik International, Inc. UK Customer Service Centre at +44 (0) 333 123 5677. Some replacement parts and accessories for the Water Flosser are also available at www.waterpik.co.uk.

For questions or problems please call the customer service centre before returning the product. Please do not send your unit to the Waterpik International, Inc. address as this can cause lengthy delays.

Refer to the serial and model numbers in all correspondence. These numbers are on the bottom of the unit behind the reservoir.

Still have questions? Go to www.waterpik.co.uk.

Water Pik, Inc. warrants to the original consumer of this new product that it is free from defects in materials and workmanship for 2 years from the date of purchase. Consumer will be required to submit the original purchase receipt as proof of purchase date and if requested, the entire product, to support a warranty claim. Water Pik, Inc. will replace at its discretion any part of the product, which in its opinion is defective, provided the product has not been abused, misused, altered or damaged after purchase, was used according to instructions, and was used only with accessories or consumable parts approved by Water Pik, Inc. Installation is the responsibility of the consumer and is not covered by the warranty. This limited warranty excludes accessories or consumable parts such as tips, etc. Use with improper voltage will damage product and VOID warranty.

This warranty gives you specific legal rights. You may also have other rights that vary, depending on the law in your place of residence.

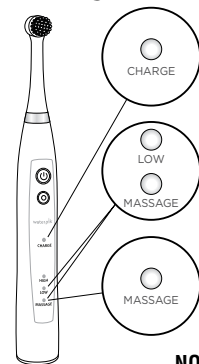
GETTING STARTED WITH YOUR TOOTHBRUSH / CARE OF YOUR TOOTHBRUSH

Charging the Toothbrush

Charge for 24 hours before first use. When the toothbrush is fully charged, the charge indicator will be green while sitting on the base. A full charge will last for approximately 1 week, if brushing twice daily. If the toothbrush is to be stored for an extended period of time (three months or more), be sure to fully charge it prior to storage.

Recharge Indicator Lights (when on Charger Base)

Brushing



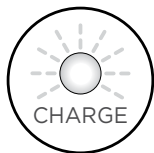
Fully charged:
CHARGE light is green

$\frac{2}{3}$ charge:
Both MESSAGE and LOW lights are green.

$\frac{1}{3}$ charge:
MESSAGE light is green. Recharging is recommended.

NOTE: If the charger light blinks red rapidly when off the charger base, the unit will not operate.

In order for the toothbrush to begin to work again, it must be placed on the charger for approximately 1 hour.



Modes

High: Everyday cleaning performance

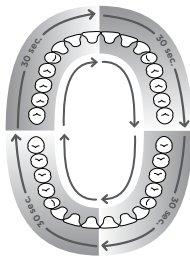
Low: Gentle movements for effective cleaning of sensitive teeth

Massage: Micro-pulse pattern for enhanced gum stimulation

- Slide the brush head onto handle and push it down firmly.
- Select mode by pressing mode button until light is by desired mode then press On/Off button.
- Place the brush head into your mouth before turning the unit on.
- Use light pressure with a small, slow back and forth motion covering one or two teeth at a time.
- **Quad Timer:** Your Toothbrush will create a short pause every 30 seconds, to remind you to move to the next quadrant of your mouth.

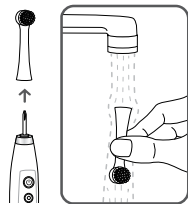


- **2-Minute Timer:**
The brush will automatically shut off after 2 minutes of run time.



Cleaning

1. **After each use,**
turn off unit, remove the brush head from the handle and rinse brush head under running water.
2. Wipe the handle dry after each use.



Service

Waterpik® toothbrushes have no consumer serviceable or replaceable electrical items and do not require routine service maintenance. For all accessories go to www.waterpik.co.uk. You may also call our low national rate number at +44 (0) 333 123 5677.

TOOTHBRUSH LIMITED TWO-YEAR WARRANTY

Refer to the serial and model numbers in all correspondence. These numbers are located on the bottom of your unit.

Disposal

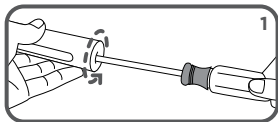
This product contains rechargeable Nickel Metal Hydride batteries. The batteries are not replaceable. Please do not dispose of the unit in the household waste. Remove the batteries per the instructions below and recycle at your local recycling center.

Battery Removal

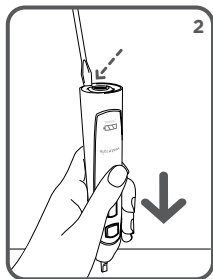
Note: This process is not reversible

Remove the battery only at the end of the product's life for recycling. Doing so earlier will destroy the product. Deplete the battery charge until the brush no longer operates. Observe basic safety precautions. Remove the batteries as shown and recycle them and the rest of the product according to local regulations.

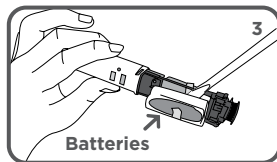
1. Use a screwdriver to remove the screw and battery door.



2. Hold the handle upside down, press the toothbrush shaft, and release the two tabs inside the handle using a flathead screwdriver to release the internal components of the handle.



3. Insert screwdriver next to the battery connections, and push out of plastic covering. Twist and break the battery connections. Remove the circuit board and pry the battery from the circuit carrier.



4. Recycle or dispose of the battery properly.

Water Pik, Inc. warrants to the original consumer of this new product that it is free from defects in materials and workmanship for 2 years from the date of purchase. Consumer will be required to submit the original purchase receipt as proof of purchase date and if requested, the entire product, to support a warranty claim. Water Pik, Inc. will replace at its discretion any part of the product, which in its opinion is defective, provided the product has not been abused, misused, altered or damaged after purchase, was used according to instructions, and was used only with accessories or consumable parts approved by Water Pik, Inc. Installation is the responsibility of the consumer and is not covered by the warranty. This limited warranty excludes accessories or consumable parts such as tips, etc. This warranty gives you specific legal rights. You may also have other rights that vary, depending on the law in your place of residence.



Water Pik, Inc.

1730 East Prospect Road
Fort Collins, CO 80553-0001 USA

www.waterpik.com

Waterpik, International, Inc.

Castle Court, 41 London Road
Reigate, Surrey RH2 9RJ
United Kingdom

www.waterpik.co.uk

Waterpik, International, Inc.

UK Customer Service Centre
+44 (0) 333 123 5677

Waterpik® is a trademark of Water Pik, Inc. registered in Argentina, Australia, Benelux, Brazil, Canada, Chile, China, Czech Republic, Denmark, EU, Finland, France, Germany, Hong Kong, Hungary, India, Israel, Italy, Japan, Kazakhstan, Korea, Malaysia, Mexico, New Zealand, Norway, Pakistan, Philippines, Poland, Russian Federation, Saudi Arabia, Singapore, South Africa, Spain, Sweden, Switzerland, Taiwan, Turkey, Ukraine, United Kingdom, and the United States.

Waterpik® (stylized) is a trademark of Water Pik, Inc. registered in Australia, Brazil, Canada, China, EU, Hong Kong, Israel, Japan, Korea, Malaysia, Mexico, Philippines, Russian Federation, Saudi Arabia, South Africa, Switzerland, Taiwan, Trinidad & Tobago, Ukraine and the United States.

Pik Pocket® is a trademark of Water Pik, Inc. registered in Canada and the United States.

Plaque Seeker® is a trademark of Water Pik, Inc. registered in Canada, China, EU, and the United States.

waterflosser® is a trademark of Water Pik, Inc. registered in Brazil, Canada, China, Mexico, Switzerland and the United States.

Made in China.